

ARTS EVENTS

Patrons
Canterbury City Council
Dean and Chapter of Canterbury Cathedral
University of Kent
Canterbury Christ Church University
University for the Creative Arts, Canterbury
The Nevill Arts Trust
Stephen & Ann Gerlis Scholarship
King's School Canterbury

**SEPTEMBER-
DECEMBER 2013**

Supporting Grass Roots Arts Since 1967

Canterbury Festival 2013

Many of our members have events in Kent's International Arts Festival
This year's brochure is available to download - go to <http://www.canterburyfestival.co.uk>

Visit us  www.facebook.com/canterburyarts

For more information about events listed below, please see contact details for affiliated organisations on the back page.

MUSIC

CANTERBURY CHRIST CHURCH UNIVERSITY MUSIC DEPARTMENT

Lunchtime concerts

St Gregory's Centre for Music, North Holmes Road, Canterbury, CT1 1QU All concerts start at 1pm and are open to the public.

02 October Robert Rawson and the Harmonious Society of Tickle-Fiddle Gentlemen

The original Harmonious Society of Tickle-Fiddle Gentlemen was formed in London in 1678 by Roger L'Estrange and Thomas Britton and a group of the same name was still giving concerts in the middle of the eighteenth century. This new ensemble has been formed under the same name and whose central repertoire is drawn from the collections of manuscripts and prints associated with the original ensemble and London concert life in general, as well as other fascinating corners of baroque repertoire.

09 October Dulce Amarum
Maria Theodoropoulou (voice) and Elena Cicinskaite (theorbo/lute) perform a concert to celebrate Baroque music.

16 October Dance for the Camera
A screening of short dance films/dance for the camera pieces made by BA (Hons.) Dance Education students.

Please note: This event will be in the Anselm Centre for Performing Arts, North Holmes Road Canterbury CT1 1QU

21 October - 2 November - Canterbury Festival Daily Lunchtime Concerts (see later details)

06 November Richard Rozze and Friends
Richard Rozze, members of the jazz teaching team and talented students delight us with jazz standards and original composition
13 November Composers Concert
Dynamic new music and sound presented in a range of different media, introduced by Dr. Matthew Wright, Reader in Composition and Sonic Art.

20 November Canterbury Scratch Orchestra
Canterbury Scratch Orchestra is a unique student collective interested in an open approach to improvising music, led by Dr Sam Bailey.

27 November Early Music Ensemble and Early Dancers
The University's Early Music Ensemble and dancers on the 'Early Dance' module get together for a unique collaboration of music and dance from the 1600s.

04 December Performance Showcase
This is the academic year's first showcase of musical talent, from students in the Department of Music and Performing Arts.

11 December Performance Showcase
This is a special festive showcase concert by talented Year 2 and 3 students from the Department of Music and Performing Arts Entry FREE but after each concert there is a retiring collection for the Department of Music and Performing Arts Scholarship Fund. Donations are warmly welcomed.

For more information, email events.music@canterbury.ac.uk or call 01227 782428 or visit: www.canterbury.ac.uk/events/music

Canterbury Festival Lunchtime Concerts in collaboration with Canterbury Christ Church University

All lunchtime concerts are in St Gregory's Centre for Music, North Holmes Road (unless otherwise stated) and commence at 1 pm Free admission

Mon 21 October Jack Hues and the Quartet
Before gaining several top ten hits in the US as frontman of 80's band Wang Chung, Jack Hues studied composition at the Royal College of Music. Currently he is touring the UK promoting his third album with a stellar band that uniquely combines composition, improvisation and beautiful songs (Jack Hues - guitar and voice, Sam Bailey - piano, Liran Donin - double bass, Mark Holub - drums).

Tue 22 October The October Trio
Presenting two of the great works for piano, violin and horn: Lennox Berkeley's lyrical and quirky trio coupled with Brahms' melancholic masterpiece. Stelios Chatziiosifidis (violin) Irena Marie Rieband (horn) and Matthew Shipton (piano).

Wed 23 October Music and Dance

Contemporary and new works and improvisations performed by Alistair Bamford (electric violin/voice) Els Van Hoof (dancer) and Francis Bamford (piano).

Thu 24 October Oh Brave New World: Songs of an Enchanted Island Internationally acclaimed soprano Laure Meloy and versatile pianist Sarah Wilkinson present a song recital exploring magic and the supernatural in Elizabethan poetry. Arias from Thomas Adès' award winning opera The Tempest are interspersed with readings and songs by Shakespeare, Auden, Britten, Ives, Jonathan Dove, and Dominick Argento.

Fri 25 October David Campbell, Margaret Archibald and Jonathan Duke David Campbell, Margaret Archibald (clarinets) accompanied by Jonathan Duke on piano present a programme to include Mendelssohn Konzertstück Nr. 1 for clarinet, basset-horn and piano and Ponchielli Il Convegno for two clarinets and piano.

Sat 26 October Alumni Concert

A spectacular music recital by outstanding alumni of the department.

Mon 28 October Dazzled by Colours

A programme of modern music for one and two recorders, played by Peter Bowman and Kathryn Bennetts, all composed since 1990, including a world première and works by Boustead, Fox, LeFanu and Bowman.

Tue 29 October Saxophone and Piano Recital

Saxophonist Sam Corkin; recent Fellow of the Guildhall School of Music and Drama, and Sam Rathbone; pianist and assistant Director of Music of Rochester Cathedral, perform an eclectic program of music encompassing contemporary works alongside fresh interpretations of music from centuries past.

Wed 30 October Winter Words

Philip Eve (tenor) and Michael Chandler (piano) perform Winter Words 1954, a performance based on the concerts that Peter Pears and Benjamin Britten gave in 1954. The concert also includes favourites by Purcell and Schubert, and some of Britten's ever-popular Folksong settings.

Thu 31 October – Composers' Competition

This Composition Competition embraces the wide diversity of composition within the Department of Music and Performing Arts, from chamber music to songwriting, surround sound installations, and more.

Fri 1 November Sensory Movement and Play

An interactive installation entitled 'Sensory Movement and Play'. This will be an opportunity for children under 5 and their families to go on an adventure to explore a range of props, objects and materials and then enjoy a performance.

There will be two booking slots 11-12pm and 1-2pm.

Venue: Anselm Hall, North Holmes Road, Canterbury

Sat 2 November Aenaos Echos - Perpetual Sound

Music for sho (Japanese mouth organ), female voice, and violin. A staged performance of contemporary and traditional works by Western and Eastern composers exploring the sound of the Japanese sho. Works by Toshio Hosokawa, John Cage, Michael Finnissy, May Kay Yau and Basil Athanasiadis.

There is a collection for the Department of Music and Performing Arts' Scholarship Fund after each lunchtime concert.

For further information please contact 01227 782428

Canterbury Festival Morning Concerts in collaboration with Canterbury Christ Church University's Department of Music and Performing Arts music students

Festival Spiegeltent, Old Dover Road, Canterbury CT1 3NZ.

Wednesday 23 October 10.30am Morning Concert: String Quartet

A chamber music concert headlined by the final year String Quartet.

Friday 25 October 10.30am Morning Concert: Jazz Ensembles

Coffee time jazz including jazz classics and original compositions

Wednesday 30 October 10.30am Morning Concert: Harmony 6

An a cappella vocal group with a wide repertoire from Ave Verum Corpus to Danny Boy

Friday 1 November 10.30am Morning Concert: String Quartet 10.30am

A chamber music concert headlined by the final year String Quartet. Tickets £5 through the Festival Box Office

Canterbury Christ Church University's Launch Fest 2013

Admission Free.

Thursday 26 September

Surround Sound Installations 12.30 - 1.30pm

Maxwell Davies building, North Holmes Road, Canterbury CT1 1QU

Dynamic sound works in 5.1 and 7.1 surround sound created by students on the BA Creative Music Technology, BA Commercial Music, BA Music Production, BMus and MMus courses.

Directed by Dr Matt Wright (Reader in Composition and Sonic Art and Programme Director for Creative Music Technology)

Apollo Chamber Ensemble and Coleridge Chamber Choir

5.00pm St Gregory's Centre for Music, North Holmes Road,

Canterbury CT1 1QU

Mozart's most celebratory work, his Coronation Mass, performed by the Apollo Ensemble: students on the BMus and MMus

programmes, alumni and friends. The Coleridge Chamber choir

present an enjoyable programme including songs by William Walton and Anton Bruckner.

Conducted by Tadeusz Kaznowski (MMus Conducting Graduate) and Ben Scott (CCCU Chapel Scholar).

Friday 27 September

Jazz and Big Band afternoon 2.30 – 3.30pm

Bandstand outside the Maxwell Davies building, North Holmes Road, Canterbury CT1 1QU

Join students and staff for an afternoon of big band classics.

Directed by Peter Cook (CCCU Big Band Leader)

Top Voices in Concert

4.00-4.30 St Gregory's Centre for Music, North Holmes Road,

Canterbury CT1 1QU

A half-hour concert of music for upper voices, showcasing a remarkable range of repertoire from medieval sacred music to jazz arrangements

Directed by Chris Price (Senior Lecturer in Music and Performing Arts)

Saturday 28 September

Commemoration Concert

1.30pm – 2.15pm St Gregory's Centre for Music, North Holmes

Road, Canterbury CT1 1QU

In memory of, and celebrating the lives of Carmel Kaine, Ava June Cooper and Sheila Amit Luxon

Presented by the staff and students of the Department

Vaughan Williams afternoon

2.30 - 4.30pm St Gregory's Centre for Music, North Holmes Road, Canterbury CT1 1QU

Vaughan Williams' Concerto Grosso 'from scratch', String Quintet, with dance accompaniment, and other chamber works.

Music directed by Martin Outram (Maggini Quartet and Senior Lecturer in Music),

Dance Directed by Dr Angela Pickard

The Fantastic Friends of Freddie McFinn, and other stories

6.00-6.45 pm St Gregory's Centre for Music North Holmes Road

Canterbury CT1 1QU

Original pieces of dance-drama exploring the use of sign language in theatre by our first Creative Arts graduate, Mo Pietroni.

Freddie McFinn is an autistic boy barred from the world of normal communication by his disability. His parents, frustrated by his

inarticulate isolation, fail to communicate with him by speech. But in a fabulous journey of allegorical fantasy, Freddie learns from the

animal and insect world the power of visual communication – and teaches his parents his new language.

Mo Pietroni has created a number of innovative dance-drama pieces as part of her final-year project work, bringing together the world of dance, theatre, words and signs.

Canterbury Christ Church University's Jazz week: 4-8 November 2013

All lunchtime concerts are Free and start at 1pm

St Gregory's Centre for Music, North Holmes Road, Canterbury CT1 1QU (unless otherwise stated)

Second and third year jazz students perform a variety of jazz standards and contemporary jazz compositions

Monday 4 November Student Jazz Concert

Tuesday 5 November Student Jazz Concert

Wednesday 6 November Richard Rozze Trio

Richard Rozze, members of the jazz teaching team and talented students delight us with jazz standards and original compositions

Thursday 7 November Student Jazz Concert

Friday 8 November 10.30am – 5pm Trevor Tomkins Jazz Workshop

Venue: Peter Maxwell Davies Building, North Holmes Road, Canterbury

Drummer and educator Trevor Tomkins will give a workshop exploring the importance of rhythm in jazz and other forms of improvised music... "I hear rhythms, mostly, and then I put notes to them. Dizzy Gillespie "

Friday 8 November 8.30pm – 11.00pm Richard Rozze Band featuring Trevor Tomkins and Paul Booth

Venue: Anselm Centre for the performing Arts, North Holmes Road, Canterbury

Trevor is one of the foremost jazz drummers working in the UK today. Fresh from a rhythmic masterclass with Music and Performing Arts students and guests during the afternoon, Trevor is joined by more of the most talented jazz musicians in the country for a gig finishing off our Jazz Week in style.

Fri 15 November, 7.30pm Maggini Quartet

St Gregory's Centre for Music, North Holmes Road, Canterbury CT1 1QU

Our resident string quartet perform Mozart Quartet in D K499, Britten Quartet No 1, Mendelssohn Quartet in D Opus 44/1

Entry: £12 full, £5 for students

To book, please visit: www.canterbury.ac.uk/events/music

Email events.music@canterbury.ac.uk

Telephone 01227 782428

Tue 10 December, 8pm Canterbury Christ Church Big Band

The Lounge Pub, St George's Centre, Canterbury

Directed by Peter Cook, the Big Band presents a festive programme at the Students' Union. Lots of festive fun plus special guests! Admission Free

Fri 13 December, 7.30pm Christmas Concert

Augustine Hall, Augustine House, Rhodaus Town, Canterbury CT1 2YA

Ensembles from the Department of Music and Performing Arts present a festive and celebratory programme for the end of term.

Includes performances by the Broadway Performance Choir, Symphony Orchestra, Cantata Choir, Symphonic Wind Orchestra, String Orchestra and more!

Entry: £10 Full, £8 Friends of St Gregory's, £3 Students

To book, please visit: www.canterbury.ac.uk/events/music

Email events.music@canterbury.ac.uk Telephone 01227 782428

CANTERBURY CHORAL SOCIETY

See website for more details

October 26, 2013 7.30pm

Benjamin Britten

Celebrating the centenary of Benjamin Britten's birth with one of his most significant works Evelina Dobracheva soprano

Benjamin Hulett tenor

Benjamin Appl bass

Canterbury Philharmonic Orchestra

Canterbury Choral Society

Canterbury Choral Society Youth Choir

Richard Cooke, Conductor

TICKETS: £28.50, £25, £18, £10

Benjamin Britten is widely considered to be the finest of all Britain's modern composers. Canterbury Festival 2013 will include Benjamin Britten's War Requiem. True to his ambition for the first ever performance of Britten's War Requiem (thwarted by Soviet Union visa control), we bring together a Russian soprano, a British tenor and a German bass. The original performance of Britten's War Requiem did not include this powerful reconciliatory union but the original recording did.

CANTERBURY CITY BRASS BAND

1ST SEPT SUNDAY DUNGENESS BLESSING OF LIFEBOAT 5.30 p.m.

13th SEPT FRIDAY SEVINGTON 7.30 p.m.

21st SEPT SATURDAY ST.MARYS BAY 7.30 p.m.

5th OCT SATURDAY DUNGENESS 7.30 p.m.

12th OCT SATURDAY RUCKINGE CHURCH 7.30 p.m..

29th NOV FRIDAY ST.NICHOLAS CHURCH STURRY 7.00p.m.

6th DEC FRIDAY CHARTHAM HATCH

7th DEC SATURDAY ASHFORD SCHOOL to be confirmed

13th DEC FRIDAY SEVINGTON 6.30 p.m.

15th DEC SUNDAY IVYCHURCH 3.30 p.m.

CANTERBURY FESTIVAL ORCHESTRA

Sat 14th September, 7.30pm 'Summer Timbre'

With John Harle - Saxophone

Conductor - Anthony

Halstead

Leader - Jeremy Ovenden

& Ian Crowther - Cor Anglais

COLYER-FERGUSON HALL,

UKC CANTERBURY

An evening of wonderful summer music from the FCO and renown classical saxophonist, John Harle.

A. Glazunov Concerto in E flat major

I. Stravinsky 'Pulcinella' Suite for Small Orchestra

G. Donizetti Concertino for Cor Anglais & Orchestra

Chick Corea Children's Songs

F. Schubert Symphony No. 5

J. Harle Interpretation of Dreams (from the score Lucian Freud-

Painted Life) www.festivalchamberorchestra.co.uk

Ticket prices £18.00, student £9.00, under 12's £5.00

Crowthers of Canterbury, Tel: 01227 763965

www.crowthersofcanterbury.co.uk

Or Gulbenkian Tickets and Information, University of Kent, Tel:

01227 769075, www.thegulbenkian.co.uk

Canterbury Festival Event

Sunday Mornings at the Spiegeltent with the FCO

Sunday, October 20th 2013 at 11:00 am

Kent Cricket Club, Old Dover Road, Canterbury

More information

Tickets £10. Available from Canterbury Festival: Festival Box Office,

The Marlowe Theatre, Canterbury, Kent CT1 2AS Tel: 01227 787787

or online



'Musica per la Notte di Natale'
FCO with Paul Young
StMary bredin
Saturday, November 30th 2013,
7.30pm St Mary Bredin Church,
Canterbury. Festival Chamber
Orchestra perform a beautiful
programme of Music for
Christmas. More information
Ticket prices £15.00, student
£8.00, under 12's £5.00
Crowthers of Canterbury



Tel: 01227 763965

CANTERBURY GUITAR SOCIETY

Mon 18th November 2013 7.30pm GUITAR Recital ALLAN NEAVE
Allan's programme will include, amongst other works, J.S.Bach :
Partita III, BWV 1006 originally for solo violin; David Fennessy:
'Rosewood' (5 short pieces) – a contemporary Irish composer; and
Mario Castelnuovo-Tedesco: Capriccio Diabolico – Italian late-
romantic.

Allan is Professor of Guitar and Harp at the Royal Conservatoire of
Scotland, Glasgow. He studied there (1984) and the RNCM (1988)
and has since been performing worldwide. He is a regular guest at
many of the worlds leading musical events and has worked with
many influential musicians including Nikita Koshkin, Edward
McGuire, Hans Werner Henze and Stephen Dodgson. To date career
highlights have included recording Gordon McPherson's

CANTERBURY MUSIC CLUB

All events at St Gregory's Centre for Music, North Holmes Rd,
Canterbury CT1 1NX Margaret Davies 01227 364526

Quoted Prices for members. Members of other music clubs on
presentation of membership cards: £12

September 26, 2013 7.45pm

Clara Mouritz - BBC Young Generation Artist

A song recital by the acclaimed mezzo soprano Clara Mouritz , BBC
Young Generation Artist with Simon Lepper official accompanist of
BBC Singer of the World. Songs from the South.

Italian Song Book settings by Hugo Wolf and Joseph Marx as well as
songs from Clara's native Spain by composers including De Falla,
Turina and Granados.

Single Concert Ticket: £15. CAVATINA Free Ticket Scheme for those
aged 8 to 25. Other Students Single Concert Ticket: £5

October 17, 2013 7.45pm

London Baroque - THE MUSIC OF GEORGIAN ENGLAND

London Baroque, regarded worldwide as one of the foremost
exponents of baroque chamber music G.F.Handel Trio sonata in g
(Dresden) HWV 393

T.A.Arne Sonata II in G major

Thomas Erskine Sonata no.6 in G

J.C.Bach/Mozart Concerto for Harpsichord and Strings in D K.107

+++

J.C.F.Bach Sonata in G for cello and cembalo obligato (1789)

J.Haydn Concertino for Harpsichord, two violins and cello

Single Concert Ticket: £15. CAVATINA Free Ticket Scheme for those
aged 8 to 25. Other Students Single Concert Ticket: £5

November 21, 2013 7.45pm

Martin Outram, viola and Julian Rolton, piano

A joy for lovers of viola, piano and clarinet. Flackton, Sonata in C.
Alwyn, Sonatina, .

John Ireland (transcribed Outram), Sonata for Viola

Peter Avis, Solo for Viola(World Premiere)

Dale, Romance

Mozart, Trio for Viola, Clarinet & Piano, K 498(with Grenville
Hancox)

Single Concert Ticket: £15. CAVATINA Free Ticket Scheme for those
aged 8 to 25. Other Students Single Concert Ticket: £5

December 12, 2013 7.45pm

Guy Johnson, cello and Tom Poster, piano
Two fine musicians. Programme will include:
Beethoven, Cello Sonata in G minor, Op 5, No 2.

Strauss, Cello Sonata in F major, Op 6

Single Concert Ticket: £15. CAVATINA Free Ticket Scheme for those
aged 8 to 25. Other Students Single Concert Ticket: £5

CANTERBURY MUSICIANS

Welcomes musicians of all abilities and styles who wish to meet
others to play or sing together in informal, social meetings and/or
charity concerts. Further details The Old Synagogue, King Street,
Canterbury Ian Carmalt, 01227 762547 or John Kay, 01227 478223.

3 October, 7.30pm Annual charity concert

by members and friends of Canterbury Musicians Piano music,
songs, etc. Further details to be added when known. Proceeds to
Reece Puddington's appeal (Families Against Neuroblastoma,
registered number 07172636). For more information, see
<http://www.familiesagainstneuroblastoma.org/appeals/view-appeal/reece-puddington/>

THE CANTERBURY ORCHESTRA

WINTER CONCERT: Saturday 23rd November, 7.30pm

St Gregory's Centre for Music, CCUC

Perfect: Gads Hill Overture

Tchaikovsky: Suite No.1 Op.43

Beethoven: Symphony no. 3, Eroica

Tickets are £10 for adults and £4 for students and children of school age.

They are available on the door, from the Secretary (01227 751196) or online
through Wegottickets.com



CANTERBURY RECORDED MUSIC SOCIETY

All events 7.30pm The Friends' Meeting Place. 6 The Friars.

Canterbury (next to the Marlowe Theatre). Tickets which are

inclusive of interval refreshments, £4 at the door. Jennifer Bolton
(secretary) 01227 275603

September 10, 2013 7.30pm Recorded Music Society Committee

An evening of classical music, selected by the committee members
to celebrate a new season of programmes

September 24, 2013 7.30pm Let's Listen to a Serenade

An evening of Recorded Classical Music Member, Ron Chadwick will
present a programme with an intriguing title

October 8, 2013 7.30pm Elgar 1918

An evening of recorded classical music Dr Richard Braddy, priest at
St Alphege Church, Seasalter and former music teacher will present
a programme on Elgar.

October 22, 2013 7.30pm Highlighting Musical Instruments

An evening of recorded classical music Member, Hazel Brackley, will
present a programme highlighting musical instruments-but which
ones have been chosen?

November 5, 2013 7.30pm Remember, Remember

An evening of recorded classical music Member Bryan Godden will
present a programme of recorded music-the date perhaps gives a
clue as to the choice of the title?

November 19, 2013 7.30pm Hyperion's Latest Recordings

An evening of recorded music The society is pleased to welcome
another programme by Simon Perry who will introduce some of the
record company Hyperion's latest recordings.

December 3, 2013 7.30pm My Exciting Discoveries
An evening of recorded classical music Member, Bill Valentine will present his programme and explore with words and music a selection of his most exciting musical discoveries

CANTERBURY SINGERS

Tuesday 22nd October 2013, 7.30p.m. Serenade St. Peter's Anglican Church, Canterbury Admission: £8
Saturday 7th December 2013 7.30p.m. George Frederick Handel's Messiah, with the Festival Chamber Orchestra St. Catherine's Church, Faversham Admission: £10
Friday 28th February 2014 7.30p.m. Tomas Luis Victoria's Requiem (1605) Canterbury Cathedral Admission: Free with retiring collection

CANTERBURY THREE CITIES

26 October 2013 Acclardeon
A concert by a Russian professional duo - Maria Vlasova (Accordion) and Evgeny Varavko (Clarinet) This Canterbury Three Cities Association event is being promoted in conjunction with Wye Arts Association and is a ticketed event (£10).
Spring Lane School, Wye John Kemp (3CA Publicity Officer) - 01227 265503 or Email: 3ca@canterburyartscouncil.org.uk
27 October 2013 Acclardeon
A concert by a Russian professional duo - Maria Vlasova (Accordion) and Evgeny Varavko (Clarinet). This Canterbury Three Cities Association event is being promoted in conjunction with Broadstairs Music Recital Society (BMRS).
Broadstairs Methodist Church. Tickets will be available from BMRS or on the door. John Kemp as above

CANTIUM BRASS

Sunday 15th September Oval Bandstand, Cliftonville, Eastern Esplanade, Kent. CT9 2HL 2.30 p.m. - 4.30 p.m.
Sunday 10th November Dover Town Hall Remembrance Service 10.30 a.m.

CROWTHER WIND QUINTET

See Canterbury Festival Orchestra

EAST BRIDGE CHORALE AND CONCERT ORCHESTRA

East Bridge Chorale is giving a Christmas Concert together with Caritas Chamber Choir under the direction of Benedict Preece in The Colyer Ferguson Hall at The University of Kent on Saturday 21st December at 7.30pm. Works to include Vaughan Williams Fantasia on Christmas Carols and Finzi-In Terra Pax. amongst others and traditional carols. Tickets £7. For further information please visit: www.eastbridgechorale.com

FOLK IN THE BARN

Alister Atkin & The Ghost Line
Carnival * & * Arlet
Saturday 14th September 2013
The Lounge, St George's Centre, Canterbury

Doors 7.15pm for 8pm start
Tickets In advance £11 On the door £13 Students £5
Unreserved seating We are opening our exciting Autumn programme with a feast of local talent..



A double header concert from two popular home grown ensembles, at a brand new venue



Doors 6pm for 6.30pm start Tickets £12 in advance £13.50 on the door
Unreserved seating
Saturday 28th September 2013
The Chapel, Canterbury Christ Church Uni
Tickets £15 Full price £13
Concessions £10 students £2 extra on the door
Unreserved seating
Doors 7.15pm 8pm start
Formed in 1989, IONA take their name from the small island off the west coast of Scotland

Kris Dollimore
Sunday 22nd September 2013
The Black Robin Inn, Kingston, nr Canterbury
During a career in music, spanning more than four decades, Kris Dollimore has graced some of the world's greatest stages

Iona



Jamie Smith's Mabon
Friday 4th October 2013
The Kingston Barn, Kingston nr Canterbury

October through to the beginning of November brings a very exciting series of new concerts at the Kingston Barn

Doors 7.15pm for 8pm start
Tickets £13 in advance £14.50 on the door Students £10
Unreserved seating

Police Dog Hogan
Friday 11th October 2013
The Kingston Barn, Kingston nr Canterbury
Doors 7.15pm for 8pm start So excited about this one, we're very lucky to be considered 'select' enough to receive this booking



Tickets £12 in advance £13.50 on the door Unreserved seating



Coope Boyes & Simpson
Saturday 26th October 2013
The Kingston Barn, Kingston nr Canterbury

Described as "quite simply the best purveyors of acappella song on these Islands", English trio Coope Boyes & Simpson combine unique reworkings of traditional material

Doors 7.15pm for 8pm start Tickets £12 in advance £13.50 on the door
Unreserved seating

Blair Dunlop Trio
Saturday 2nd November 2013
The Kingston Barn, Kingston nr Canterbury
BBC Radio 2 Horizon Award Winner
2013 Blair Dunlop is a 21-year old captivating vocalist, phenomenal guitarist and over the past year has emerged as one of the U.K.'s finest



Doors 7.15pm for 8pm start Tickets £13 in advance £15 on the door
Unreserved seating

James Hickman & Dan Cassidy
Sunday 10th November 2013
The Black Robin Inn, Kingston, nr Canterbury
Doors 6pm for 6.30pm start Tickets £12 in advance £13.50 on the door
Unreserved Seating A transatlantic duo inspired by the traditions of America and Britain

Lau
Friday 22nd November 2013
St Mary's Church, Sandwich

Doors 7pm for 8pm start Tickets £15 in advance £17 on door Unreserved seating Winner of 'Best Group' in the BBC Radio 2 Folk Awards 2008, 2009, 2010 and 2013 This generation's most inventive folk band return with new tours and energetic performances



HERNE BAY ORGAN & KEYBOARD CLUB

All start at 7.30 pm, Pettman House, Hanover Square, Herne Bay.
Meetings on the 2nd and 4th Wednesdays of each month.

HORSEBRIDGE ARTS AND COMMUNITY CENTRE

Contact 01227 281174. Or See www.horsebridgecentre.org.uk
September 6, 2013 7.00pm Jazz with the Blue Rhythm Kings
The Blue Rhythm Kings are one of the only bands in the United Kingdom specialising in the iconic music from the 1920s and early 1930s; the glorious era which has become known as "Jazz Age", bringing to mind flapper dresses, bright young things, all night parties and the fusion of Jazz improvisation with popular dance music of the day. The Blue Rhythm Kings are one of the only bands in the United Kingdom specialising in the iconic music from the 1920s and early 1930s; the glorious era which has become known as "Jazz Age", bringing to mind flapper dresses, bright young things, all night parties and the fusion of Jazz improvisation with popular dance music of the day.

This Kent based band has received many accolades for its eclectic programme of some of the best music from the era, played by handpicked musicians who are fully versed in the idiom and can therefore play fresh, improvised solos at every performance. The band has a long history, dating back to the 1970s, when there were a few 1920s style bands around, now Blue Rhythm Kings are one of the only ones left in the South East.

The Horsebridge, since it first opened its doors, has been the "home base" of the Blue Rhythm Kings and a great night out is guaranteed at each and every one of their monthly concerts.

The Blue Rhythm Kings have represented England (in the Jazz category) at the Boulogne Music Festival in 1990, where they shared the bill with Yehudi Menuhin. They have also appeared at Jazz festivals throughout the UK, including the prestigious Bude Festival. Jazz buffs will recognise the direct influence of Bix Beiderbecke, Red Nichols, Ben Pollack, Gene Gollette and Paul Whiteman which, together with some lovely ballads from the 1930s featuring vocals in the styles of Bing Crosby and Al Bowlly, provides a unique and exciting programme; definitely not to be missed.

"Jazz/Dance music of the twenties in a better than usual re-creation of the real thing, both in sound and spirit... Accomplished group who actually sounded interested in the music per se, rather than opportunities for endless self-indulgent solos... Audience clearly enjoyed and appreciated the performance. A good evening, much enjoyed, and at more than one level. The Blue Rhythm Kings are a group worth looking out for." - The Farnham Herald

September 13 and 27, 2013 7.00pm The Neil Diamond Story
As Neil Diamond prepares to mark 50 years at the top of his profession, singer and guitarist Bob Drury, described as the UK's 'Voice of Neil', celebrates the life and work of this musical legend. As Neil Diamond prepares to mark 50 years at the top of his

profession, singer and guitarist Bob Drury, described as the UK's 'Voice of Neil', celebrates the life and work of this musical legend. Featuring iconic songs from a hit filled musical career such as 'Cracklin' Rosie', 'America', 'Play Me', 'Sweet Caroline', 'I Am I Said' and 'Love on the Rocks' alongside much loved album tracks and more recent acoustic material. Bob Drury's one-man show is a must see for all Diamond fans. "If I didn't know better I'd have said that was Neil Diamond singing" Pat Marsh BBC Radio Kent
September 21, 2013 7.00pm Sarah Gillespie Duo

Sarah Gillespie has gathered a loyal fan base enchanted by her poetic, witty lyricism mixed with blues, jazz & folk. Sarah Gillespie has gathered a loyal fan base enchanted by her poetic, witty lyricism mixed with blues, jazz & folk.

With appearances on BBC Radio 4's Woman's Hour and Start the Week, reaching over 15 million listeners. Sarah has toured across Europe and in the UK, including headline shows at the world famous Ronnie Scott's Jazz Club.

Sarah Gillespie will be dueting at the Horsebridge with Ben Bastin on double bass and tuba.

"Achingly pretty and bittersweet" The Independent *****

"An incandescent new presence who matches her imposing delivery with superior lyrics" The Guardian ****

"Streetwise and romantic, tender and tough." Daily Telegraph ****

INVICTA BAND

The Band practises every Tuesday evening from 7:30 to 9:30 at Herne Bay High School. This is situated in Bullockstone Road, Herne Bay. If you are interested, why not come along to a rehearsal. You should be capable to Grade V on your instrument.

LAURE MELOY

October 24, 2013 1.00pm Song Recital

St. Gregory's Centre for Music, Canterbury Christ Church University, North Holmes Road, Canterbury, CT1 1QU This is a free event "Oh Brave New World: Songs of an Enchanted Island" performed by internationally acclaimed soprano Laure Meloy and versatile pianist Sarah Wilkinson. A song recital including pieces by Thomas Adès, Benjamin Britten, Dominick Argento, and Jonathan Dove, uses the theme of magic and the supernatural in Shakespeare and other Elizabethan poetry. Art songs and opera arias will be interwoven with readings from Shakespeare plays and W H Auden's The Sea and the Mirror.

Thursday 9 January 2014 at 1:15 p.m., St. Pancras Church, London, <http://www.stpancraschurch.org/index.php?id=17>

Excerpts from the programme will be presented at the Beaney House of Art and Knowledge in Canterbury, as part of Accidental Collective's Pot Luck, on 14 December 2013

MOCK TUDOR BAND

Please note: Schools who include the Tudor Period in their curriculum, we would be very happy to contact them with a view to giving a concert. We have two costumed dancers who also teach about the clothes they used to wear.

MUSIC AT ST PETER'S

St Peter's Methodist Church, St Peter's St, Canterbury, CT1 2BE

Jenny Devenish 01227 456359

September 21, 2013 7.30pm Lawson Trio

Contemporary Piano Trio Schubert: Sonatensatz in Bb Major

Mendelssohn: Trio No 2 in C minor, Op 66

Bridge: 3 Miniatures (Hornpipe, Valse Russe, Salterello)

Schostakovich: Trio No 2 Op 67

October 23, 2013 7.30pm Sacconi Quartet

Popular String Quartet well known locally and internationally Haydn:

String Quartet in F minor, Op 20 No 5

Britten: String Quartet No 2 in C Op 36

Beethoven: String Quartet in A minor, Op 132

October 30, 2013 7.30pm Nicholas Daniel & Julius Drake
 Classical Oboe and Piano Music Concert
 Bach: Sonata in Eb
 Thea Musgrave: Threnody for Cor Anglais and Piano
 Britten: Temporal Variations
 Schumann: 3 Stuke in Volkston
 Mark Simpson & Helen Grime: 2 Metamorphoses after Ted Hughes
 Bach: Sonata in G Minor BWV 1030b
 November 23, 2013 7.30pm Korros Ensemble
 Eliza Marshall (Flute), Nicholas Ellis (Clarinet), Camilla Pay (Harp)
 Haydn: Sonata in E major
 Bruch: 2 Pieces
 Ravel: Sonatine
 Bax: Elegiac Trio
 Nino Rota: Sarabande and Toccata
 Schostakovich: 4 Waltzes
 De Falla: El Arnor Brujo

SNOWDOWN COLLIERY MALE VOICE CHOIR

CONCERT DATES :

September 14th St James's Church, Staple
 September 24th St John's Church, Barham
 October 12th United Reformed Church, Folkestone
 October 26th Hersden Community Centre, Hersden
 November 9th All Saints Church, Stourmouth
 November 30th St Mary's Church, Walmer
 December 7th All Souls Church, Cheriton
 December 13th St Finbarr's Church, Aylesham (Free
 Christmas Concert with Snowdown Band)

UNIVERSITY MUSIC AT UKC

See website for details
<http://www.kent.ac.uk/music/makingmusic.html>

WHITSTABLE BRASS

Saturday 7 September 2013: Playing at Lord Whisky Fun Day,
 Stelling Minnis between 12noon and 1.30pm
 Sunday 8 September 2013: Broadstairs Bandstand 2.30 - 4.00pm
 Tuesday 15 October 2013: Evening Concert at St. Andrews Church,
 Grimshill Road, Whitstable at 7.30pm.
 Tuesday 10 December 2013: Annual Christmas Concert, St. Andrews
 Church, Grimshill Road, Whitstable at 7.30pm
 For more information Sheila Holness on 01227 266248.



WHITSTABLE CHORAL SOCIETY

Saturday 16th November 7.30pm
 Venue – St. Bartholomew's Church, Herne Bay
 Directed by David Flood
 Soloists : TBA Organist: TBA
 Tickets prices: Adults £12 and Children £8
 Sat 14th December at 7.30pm Concert of Carols
 St Alphege Church, High Street, Whitstable, Kent CT5 1AY
 Conductor – David Flood Organist – TBA
 Extensive parking in Middle Wall car park, within 5 minutes' walk
 The audience will be invited to sing a number of the most well-
 known and traditional carols with the choir.

Carol books will be made available to the audience before the concert.
 Children in the audience will be invited to perform "Away in a Manger" under David Flood's personal direction.
 Afterwards, every child will receive a small reward for their glorious contribution to the evening.
 This concert is a wonderful mixture of choral and well known seasonal music appealing to the whole family – a tradition in the Whitstable calendar.
 Ticket Prices: £7.50 Adults – £5.00 Children Under 12 – No concessions
 All Tickets available from: CANTERBURY TICKET SHOP
 Online – canterburyticketshop By phone – 01227 787787

WHITSTABLE MUSIC SOCIETY

All concerts start at 7.30pm at Whitstable Methodist Church, Argyle Rd CT5 1JS. Tickets 01227 277227
 Email: gillsmyth@talktalk.net

Sat 28th September 2013 The Navarra String Quartet
 Magnus Johnston (Violin)
 Simone van der Giessen (Viola)
 Marije Ploemacher (Violin)
 Brian O'Kane (Cello)
 with Daniel de Borah (Piano)



Sat 26th October 2013
 Alexandra Dariescu (Piano)
 JS Bach: Prelude and Fugue in G minor (WTK Book 2, No.24).
 Shostakovich: 24 Preludes Op. 34.
 Interval
 Chopin: 24 Preludes Op. 28.

Sat 30th November 2013
 Opus 1 Piano Trio
 Sarah Bitloch (Violin)
 Amy Norrington (Cello)
 Daniel Tong (Piano)
 Beethoven: Piano Trio No.2 in G major, Op.1 No.2.
 Haydn: Piano Trio No.24 in D major, Hob.XV:24.
 Interval
 Schumann: Piano Trio No.1 in D minor, Op.63.



DRAMA AND DANCE

CANTERBURY CHRIST CHURCH UNIVERSITY MUSIC DEPARTMENT

September 28, 2013 6.00 - 6.45pm This event is free.
 The Fantastic Friends of Freddie McFinn, and other stories
 Launch Fest 2013! Canterbury Christ Church University's
 department of Music and Performing Arts present three days of
 very special performances by staff, students, alumni and friends to
 celebrate the relocation of the Performing Arts programmes from
 University Centre Folkestone (UCF) to North Holmes Road campus.
 Original pieces of dance-drama exploring the use of sign language in
 theatre by our first Creative Arts graduate, Mo Pietroni.
 Freddie McFinn is an autistic boy barred from the world of normal
 communication by his disability. His parents, frustrated by his
 inarticulate isolation, fail to communicate with him by speech. But
 in a fabulous journey of allegorical fantasy, Freddie learns from the
 animal and insect world the power of visual communication – and
 teaches his parents his new language.

Mo Pietroni has created a number of innovative dance-drama pieces as part of her final-year project work, bringing together the world of dance, theatre, words and signs.

St Gregory's Centre for Music, North Holmes Road, Canterbury CT1 1QU

Tracy Selves on music.events@canterbury.ac.uk or phone 01227 782428

CANTERBURY PLAYERS



CANTERBURY PLAYERS are proud to present A tale of Terry Pratchett's Discworld at the Gulbenkian Theatre, Canterbury, from Wednesday 6th to Friday 8th November 2013. At 7.30pm
 Tickets at £12
 - Gulbcard £10

Box Office 01227 769075

Terry Pratchett's Discworld is a phenomenon of publishing. Over 30 years, and soon to be 40 novels, the series tells fantastic stories in a world remarkably like our own. Except for the magic. And the Turtle carrying the world. And the Elephants. And the Orang-Utan librarian....

At first glance, Wyrd Sisters is based on Macbeth. And it is. It is also a broader look at Shakespeare, theatre, fairy tales, and the power of rumour, amongst many other things. It's also funny. So whether or not you know the Discworld, there is probably something there for you.

All is not well in the kingdom of Lancre. Dukes are killing Kings, "Lost Heirs" are remaining conspicuously lost, Demons are appearing in washing up bowls, wandering actors are showing how a theatre can be played properly if you know the tune, and there are Witches abroad (which is odd, as they don't like the hot weather).

All business as usual. But now the Duke's men are trying to take tax from Granny Weatherwax? That's a step too far. Something must be done!

CHARLTON PARK FOUNDATION

For Bookings please call 01227 831355 or Email: info@charlton-park.org www.charlton-park.org

October 9, 2013 2.00pm
 'MAC-BETH' - A Contemporary version of the 'Scottish play'
 We are delighted to announce the return of the Theatre Company 'Acting Like Mad' in association with 'Theatrical Niche'. Sebastian Rex offers his contemporary treatment of Shakespeare's fast-moving play about the unravelling of a military coup. Earlier this year a mainly student audience enjoyed 'Acting Like Mad''s production of 'The Woyzeck' an adaptation by Sebastian Rex of the classic work by Georg Buckner.



Tickets: Adults £14, Concessions £10. Teacher FREE with groups of 10+ students. Refreshments available

December 21, 2013 3.00pm
 'Herlock Bones & The Prized Christmas Pudding'



Tickets: £7.50 Adults, £5 Children. Refreshments available. Charlton Place, Charlton Park, Bishopsbourne, Canterbury, Kent CT4 5JA For tickets call: 01227 831355. For further event details please visit: <http://www.charlton-park.org>

- Children's Theatre
 A fun-filled Christmas story for 3-11yr olds presented by Whizz Bang Pop Theatre Herlock Bones - the greatest detective alive today - needs children to solve his new Christmas puzzle. Someone has stolen Hattie's prize-winning pudding and mr Bones and his colourful characters must search high and low to find 'Big Baddie'. Whizz Bang Pop's team have packed the show with songs, dances, chases and audience interaction to ensure real involvement. Located in the Ballroom, the children are able to get 'up close' and really feel part of the performance. Photo opportunity with characters following the show.

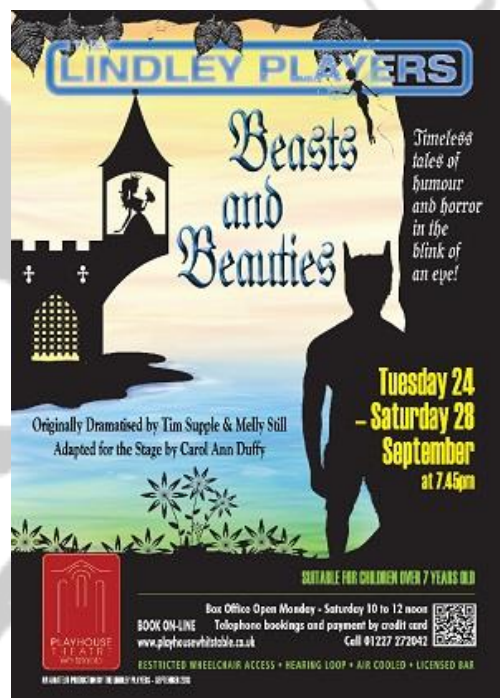
LINDLEY PLAYERS

Whitstable Playhouse Theatre

www.playhousewhitstable.co.uk

Tuesday 24 - Saturday 28 September - 7.45pm **Beasts & Beauties**

Tickets £7.50 | £8.50 | £9.50 book online

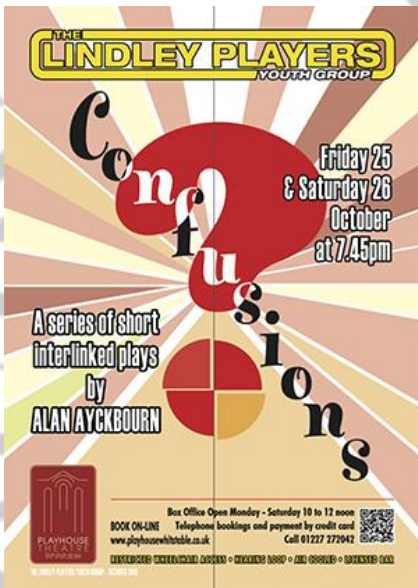


originally dramatised by Tim Supple & Melly Still adapted for the stage by Carol Ann Duffy
 Timeless tales from humour to horror in the blink of an eye!
 Originally dramatised by Tim Supple and Melly Still for the Bristol Old Vic in 2004, the enduring appeal of the eight European folk tales presented in Beasts & Beauties (and adapted for the stage by Carol Ann Duffy) is a measure of their power. Over centuries in one version or another they have enthralled, fascinated, amused and at times frightened listeners and readers of all ages. These stories combine comedy, magic and just enough traditional fairytale gore to entertain an audience.

"One of those rare nights in the theatre when some strange alchemy takes place in the dark and as shiver runs down your spine and a bubble of laughter rises in your throat, you remember why theatre really matters and can be such a transforming experience."
 - The Guardian

Includes the following dramatisations / stories:
 Blue Beard, The Husband Who Was To Mind The House, The Three Wishes, Beauty & The Beast, The Emperor's New Clothes, Toby & The Wolf, The Juniper Tree, The Girl & The North Wind

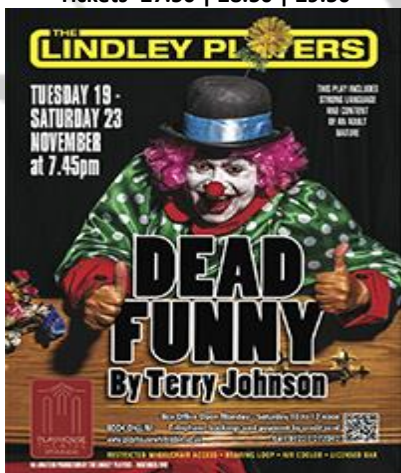
Friday 25 & Saturday 26 October - 7.45pm Confusions
 Tickets £7



A series of short interlinked plays by Alan Ayckbourn. Set in the mid-seventies, Confusions tells five short stories linked by the theme of loneliness. It shows a mother so cut off from adult contact she can only speak in baby-talk, the clumsy advances of a married salesman on the road, a work-place affair revealed over dinner, a church fête that goes spectacularly wrong and five people in a park desperately trying to connect and failing. Confusions is brilliantly observed, showing how people from all walks of life, whether married for years or meeting for the first time, are somehow completely unable to communicate. It's quintessentially British and quintessentially Ayckbourn, though it has the ability to be riotously funny and heartbreaking at the same time.

Alan Ayckbourn is one of the country's best loved playwrights having written of 70 full-length plays over a 40-year career which have earned him an Olivier award, a Tony and a CBE. His work is both funny and touching which makes it perennially popular with professionals and amateurs alike. The cast are all aged between 13yrs - 18yrs and are a dynamic and talented group. The production will be directed by Hannah Lloyd and Billy Dean with Lucie Nash on Production Manager duties

Tuesday 19 - Saturday 23 November - 7.45pm Dead Funny
 Tickets £7.50 | £8.50 | £9.50



The death of Benny Hill provides the impetus for this comedy about impotence, sex therapy and the English sense of humour. Eleanor wants what Richard won't give her. Richard wants to be left in peace. Benny would rather rest in peace, but for tonight, at least, his fans won't let him. Dead Funny - dead brilliant!
THIS PLAY INCLUDES STRONG LANGUAGE AND CONTENT OF AN ADULT NATURE

PLAYTIME THEATRE COMPANY

continues with its regular schools touring programme with an exciting range of plays and drama workshops for Infant, Junior and Secondary Schools. The recent addition of its "THEATRE FOR A DAY" programme has proved hugely popular so if you know of a school wanting to experience a professional performance, followed by workshops, resulting in a short student presentation at the end of the day, then please contact PTC. There is a 20% discount for local schools. Please contact the company for further details.



Junior Workshop Bugsy Malone



PTC Oman is whilst we were touring schools in Oman



The Dark Castle Schools tour in Germany

Their Autumn foreign touring programme will include tours to Germany, Holland, Belgium, Slovakia, Oman, Qatar and the U.A.E. Weekly drama workshops for children of all ages continue at The Horsebridge Arts Centre, Whitstable on Wednesday & Thursdays and at The Arden Theatre Faversham on Saturday mornings-booking essential. Contact Sara on 01227 266272 or playtime@dircon.co.uk

SOUTH EAST DANCE

JOIN SOUTH EAST DANCE FOR OUR INAUGURAL 'KENT DANCING' FESTIVAL, COMING TO CANTERBURY FOR THE VERY FIRST TIME. SEE INNOVATIVE UK DANCE ARTISTS, UNIQUE OUTDOOR PERFORMANCES, DANCE FILMS AND MUCH MORE. SUITABLE FOR ALL THE FAMILY!



FRIDAY 6 SEPTMBER

Murmur ZoieLogic Dance Theatre 2pm Longmarket Square
Canterbury City Centre

Murmur is a ground breaking outdoor physical theatre performance taking place in the heart of Canterbury city centre. Free Event

Echo ZoieLogic Dance Theatre 7:30pm | The Gulbenkian
Echo is the eagerly-anticipated debut work from choreographer Zoie Golding's all-male ZoieLogic Dance Theatre. The work delivers a high-octane fuelled evening of entertainment. Full £10 / Student £7
SATURDAY 7 SEPTEMBER

Dad Dancing Second Hand Dance, Workshop and Performance
9:30am - 11:30am | The Beany

A heart-warming workshop and performance, reflecting on growing up into a dancer and growing up into a dad. Suitable for everyone. Free Event

Absent made Present Freddie Opoku-Addaie 7:30pm | St. Gregory's Centre for Music

Award-winning choreographer Freddie Opoku-Addaie brings exceptional and surprising dance into the heart of the community with a unique dance happening in Canterbury. Full £10 / Student £7
SUNDAY 8 SEPTEMBER

The Big Tea Dance Ball 3 – 5pm | Colyer Fergusson Hall. With a live orchestra and a dash of glamour, join our ballroom hosts who will guide you through the steps so you'll be jiving and waltzing in no time! £5

Fresh Takes 6pm | Gulbenkian Cinema
ART31, a creative community for young people will curate a special event of dance films from the South East Dance archive and a national and international selection of invited work from young dance artists and companies. Full £5 / Student £2.50
Book: 01227 769075 / www.kent.ac.uk/gulbenkian
Design by de Ville | www.wereadeville.co.uk

OYSTER MORRIS

Sat 14 Sep 10.30am Hop Hoodening, Canterbury
Sat 21 Dec Christmas Dancing Canterbury see website for details

VISUAL ARTS



Workshops By Paul Mitchell

I would like to invite you or/and anyone you know who might be interested in any of the workshops below:

Workshop 1 - September 8th (Drawing)
Workshop 2 - September 14th (Painting)
Workshop 3 - September 22nd (Drawing)
Workshop 4 - September 28th (Painting)

All of these workshops will be focused on landscapes, urban art and street scenes.

The workshops will be held at Beach Creative, in Studio 3.
Price is £10.00 per person per class.
Classes are 10 - 12 pm.

The workshops will be of interest to anyone of all styles and abilities. They will be varied and have something for everyone!

If you're interested or would simply like to know more, then please email me on:
paulartist@msn.com or telephone: 07716 309300



Beach Creative
Beach House
Beach Street
Herne Bay, Kent
CT6 5PT

CANTERBURY PHOTOGRAPHIC SOCIETY

04 Sept Members Evening, Bring and Buy Equipment and mounting demonstration
11 Sept Print Lecture 'Wet in Whitstable' Malcolm Hardie Entries for 1st Competition
18 Sept 1st Competition Print – LANDSCAPE/SEASCAPE & OPEN Judge – Chris Parry
25 Sept Review of 1st Competition Winners – Digital AV Instruction
02 Oct Presentation 'An Evening in the Raw' – Mike Farley LRPS
09 Oct Print Workshop- 'A Racing Certainty' – Glyn Bareham LRPS CPAGB Entries for 2nd Competition
16 Oct 2ND Competition DPI – WILDLIFE (CAPTIVE OR WILD) & OPEN Judge – Malcolm Dilloway CPAGB
23 Oct Review of 2nd Competition Winners – Questions & Answers Discussions with Mentors
06 Nov Travelogue – 'VANCOUVER/CANADIAN ROCKIES' – Paul Adams DPAGB Entries for 3rd Competition
13 Nov 3rd Competition Print – HUMAN PORTRAIT & OPEN Judge – Raymond Bridges LRPS CPAGB ADPS BPE3*
20 Nov Printing Lecture by Epsom
27 Nov Workshop – 'Creative Photoshop 1' – Jack Casement Entries for 4th Competition Preview Required
04 Dec 4th Competition DPI – NATURAL PATTERNS & OPEN Judge – Deborah Armour LRPS DPAGB
11 Dec AV Workshop – 'Mr Jones Dissolvent Views' – Mike Jones

CCCU - SIDNEY COOPER GALLERY

St Peters Street, Canterbury CT1 2BQ

Opening Hours: 10:30 am – 5 pm Tuesday – Friday

11:30 am – 5 pm Saturday

Email: gallery@canterbury.ac.uk Tel: 01227 453267

www.canterbury.ac.uk/sidney-cooper

September 6, 2013 - September 21, 2013 10.30am

Prism: MA Fine and Applied Art Degree Show

MA Fine and Applied Art Graduate

An exciting contemporary exhibition profiling CCCU's graduating MA Fine and Applied Art students, exhibiting painting, photography, film, sculpture and drawing. Contained in this exciting range of work is the invitation for the spectator to be involved imaginatively with the process and thought of art.



This show has been kindly co-sponsored by The Abode, Canterbury.

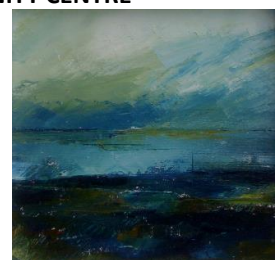
October 8, 2013 - November 9, 2013 10.30am

Naiza Khan

Naiza Khan's The Manora Project
The Manora Project traces Khan's recent engagements with the disrupted landscape of Karachi city and her long-term investigation of the Island of Manora. Making works of art that are at once lyrical and fiercely engaged, Khan stretches the definition of political art by articulating in the richest possible terms the relationship between subjectivity and politics.

HORSEBRIDGE ARTS AND COMMUNITY CENTRE

Sep 4 - 17 2013 Whitstable 10
Nigel Clarke, Gordon Lewns, Pete Hackford - deceased retrospective, Josephine Harvatt, Estelle Jourd, Ron Freeman, Robin Pates, Cathy Grun, John Jenkins, Sue Carfree





The Second Experiment
Sep 18 2013 - 30 Oct 1 2013

Quinton Winter

Landscapes and Flowers
Sep 11 2013 - Sep 17 2013

Susan Gray
Acrylic, oils and print



West Blean Wood
Sep 18 2013 - Oct 1 2013
Trevor Crone



Silver Gelatine Prints (black and white darkroom produced)
West Blean wood is one of Kent's largest woodlands which Trevor has been photographing from 2009 to 2012.

WHITSTABLE ARTS SOCIETY

October 30, 2013 - November 12, 2013 10.00am

Annual Art Exhibition - Whitstable Art Society

Whitstable Art Society Annual Exhibition 2013 Whitstable Art Society's main exhibition of the year. All work made by local artists including paintings in oils, acrylics, watercolour and mixed media, drawings and cards, crafts - a cornucopia of delights, all in time for Christmas.

Open from 10am to 5pm all days except Wed. 29th October, when it will be 1.30pm to 5pm and on Tues. 12th November, when it is 10am to 2pm.

The Horsebridge Centre, Whitstable Linda Farrington 01227 792497

OTHERS

KENT ADULT EDUCATION CENTRE

Canterbury Open Day at The Beaney, Canterbury Thursday 12th September 2013 from 10am to 3pm

Watch tutor demonstrations in Start Computing Skills, Stained Glass, Chinese Brush Painting, Acrylic Painting, Pastels and Charcoal Drawing between 10.30am and 11.30am. Pre-bookable taster sessions in Jewellery Making, Calligraphy, Tai Chi and French, Spanish, German - Language Fun at various times. Discuss with our team the range of courses we offer, how you can pay for a course and how to enrol online between 10am - 3pm. To book call 0845 606 5606 and ask for the Canterbury AEC.

Acrylic Painting

8 week course starting Tuesday 01/10/2013 from 7.30pm to 9pm
Course code: CAN/06385/B/LC Cost: £85

8 week course starting Wednesday 02/10/2013 from 1pm to 3pm
Course code: CAN/07084/B/LC Cost: £96

8 week course starting Wednesday 22/01/2014 from 1pm to 3pm
Course code: CAN/07085/B/LC Cost: £96

Art - Absolute Beginners

6 week course starting Monday 30/09/2013 from 7.30pm to 9pm
Course code: CAN/06279/B/LC Cost: £65

Art - Drawing and Painting

8 week course on a Thursday starting 03/10/2013 from 7.30pm to 9pm
Course code: CAN/06265/B/LC Cost: £85

Art - Drawing and Painting - Beginners

10 week course on a Thursday starting 03/10/2013 from 1pm to 3pm
Course code: CAN/06609/B/LC Cost: £99

Art - Masterclass

6 week course on a Monday starting 30/09/2013 from 1pm to 4pm
Course code: CAN/08197/B/LC Cost: £100

Art - Media, Printing and Painting

8 week course starting 02/10/2013 or 22/01/2014 from 7pm to 9pm
Course code: CAN/07068/B/LC Cost: £90

NEW COURSE - Art and Writing

4 week course starting 04/10/2013 from 10am to 12pm
Course code: CAN/07090/B/LC Cost: £50

Art Experience

5 week course starting Saturday 28/09/2013 from 2pm to 3.30pm
Course code: CAN/06403/B/LC Cost: £65

Calligraphy - Beginners

6 week course starting Wednesday 02/10/2013 from 7pm to 9pm
Course code: CAN/06156/B/LC Cost: £70

Chinese Brush Painting

10 week course starting Tuesday 01/10/2013 or 14/01/2014 from 10am to 12pm
Course code: CAN/06191/B/LC Cost: £96

Digital Photography - Beginners

5 week course on a Tuesday or Thursday various dates from 1pm to 3pm or 7pm to 9pm

Foundation for Art - Draw and Paint

14 week course starting 03/10/2013 from 10am to 12pm
Course code: CAN/06605/B/LC Cost: £135

Life Drawing

8 week course starting Tuesday 08/10/2013 from 1.30pm to 3pm
Course code: CAN/07083/B/LC Cost: £97

For more information and to see the full course programme for Canterbury call 0845 606 5606 or visit

www.kentadulthoodeducation.co.uk or visit Canterbury Adult Education Centre, Knight Avenue, Canterbury, Kent CT2 8QA.

CANTERBURY CERAMIC CIRCLE

4 Sept, Nick Panes, on 'American 18th C Porcelain'

2 Oct, Annual General Meeting, with a talk by one of our members

6 Nov, Netta Megan, on 'Italian Porcelain'

4 Dec, Xmas Party

We meet on the first Wednesday of every month, at St Dunstons Church Hall, London Road Canterbury, at 7.00 for 7.30 and have an informal chat with coffee and biscuits before the talk begins at 7.30. All talks are given by acknowledged experts in their fields and are fully illustrated with colour slides.

Do come along and try us out. Please ring me, Dr Virginia Webb on 01227-452563 with any queries, or just come along.

CHARLTON PARK FOUNDATION

29 & 30 November 2013 10.00am **Charlton Park Christmas Fair**

A Christmas Fair throughout the house Come and be tempted by the delightful array of stalls within the rooms of Charlton Place, offering a wide range of artisan gifts and Kentish produce over 2 days. The Christmas Cafe will be offering coffee and cakes, warming light lunches and afternoon teas.

Entrance £2.50 per person (under 16's Free). Ample free parking.

The charity that Charlton Park Foundation have chosen to give a stall this year is 'Demelza House'.

ENGLISH SPEAKING UNION

For all events apply to Dr Valerie Ainscough 01227 471180, v_ainscough@sky.com

Sat Nov 23 - 11.45 - 2.30pm: Thanksgiving lunch, Parsonage Farm Barn, Church Lane, Nackington, Canterbury, CT4 7AD

The speaker will be Peter Kyle OBE, Director General of the ESU.
Tickets: £22 members, £25 non-members.
List closes November 12th
Mon Dec 9th - 7.15 for 7.30 - Christmas Dinner, at The Black Douglas in Deal, (83 Beach Street, Deal CT14 6JB tickets £30 to include a welcome drink, 3 courses and musical/theatrical entertainment.
List closes November 28th

HISTORICAL ASSOCIATION: CANTERBURY BRANCH

canterburyha@gmail.com Tel: 01227 750576

Talks are open to the public and are free to HA members, associate members and students; non-members £3 per meeting. Associate membership of the branch is £10 per year. For further details about membership please contact Mike Gallagher, Branch Treasurer on 01227 722476.

Thursday 26 September 2013 Committee Meeting 4.30pm Kent College, H1

Thursday 10 October 2013 ANNUAL GENERAL MEETING

6.15 pm Canterbury Christ Church University, Og46, Old Sessions House followed by:-

The Gregorian Mission to Kent - Myth and Reality

7.00pm Canterbury Christ Church University, Og46, Old Sessions House

Dr. Marylin Dunn, Senior Lecturer, Glasgow University

Thursday 7 November 2013 From Ruins to Reconciliation: Coventry and Dresden after the Second World War.

7.00pm University of Kent, Grimond Lecture Theatre 3

Dr Stefan Goebel, University of Kent

Tuesday 12 November 2013 6th Form DEBATE Topic TBC 7.0pm King's School Canterbury, Gateway Chamber, St Augustine's, Lady Wootton's Green, CT1 1NG

Thursday 5 December 2013 John F. Kennedy, the Cold War, and 'what might have been': Reflections offered on the occasion of the Fiftieth Anniversary of the Assassination.

7.00pm Kent College, Old Library, CT2 9DT

Professor Kevin Ruane, Christ Church Canterbury University

Thursday 9 January 2014 Committee Meeting

King's School Canterbury, Gateway Chamber, St Augustine's, Lady Wootton's Green, CT1 1NG

Thursday 23 January 2014 They came, they saw, they conquered.

Normans, landscape and history. 7.00pm Canterbury Cathedral

Archives, CT1 2EG

Dr. Leonie Hicks, Christ Church Canterbury University

Thursday 27 February 2014 Jewish Refugees in Kent 1939-1940: The Kitchener Camp at Sandwich

7.00pm Old Library, Kent College, Canterbury, CT2 9DT

Professor Emerita Clare Ungerson, University of Southampton

Wednesday 5 March 2014 INSET Day for teachers of KS2 History.

Details TBA 9.30am Old Library, Kent College, Canterbury, CT2 9DT

Thursday 6 March 2014 6th Form Conference. Details TBA

King's School Canterbury

Thursday 13 March 2014 Swearing the people in the English revolution: the Protestation oath and popular politics.

7.00pm Canterbury Christ Church University, Og46, Old Sessions House

Professor John Walter, University of Essex.

Thursday 24 April Committee Meeting 4.30pm Kent College, H1

Thursday 1 May Forgotten Ally: Chiang Kai-shek, World War 2 and why the West forgot.

7.00pm King's School Canterbury, Gateway Chamber, St

Augustine's, Lady Wootton's Green, CT1 1NG

Professor Rana Mitter, University of Oxford

8.15pm The talk will be followed by the annual buffet. Details TBA

Friday 30 May Branch outing to the Parliamentary Archives.

Details TBA

Friday 21 June 'History at University' seminar – for Year 12 students interested in studying History at university.

Canterbury Christ Church University. Exact venue and timing TBA.

HORSEBRIDGE ARTS & COMMUNITY CENTRE

September 17, 2013 7.00pm **Temple Foods Pop-up Restaurant** at the Horsebridge Cafe Veggie Vegan Folk Night

John and Sue of local caterers Temple Foods bring you a three course veggie/vegan dinner with flavours from around the world. A fun and friendly night features entertainment from guest guitarist Nigel Hobbins of "Only 8 1/2 Miles to Dreamland" fame.

<http://www.templefoods.co.uk> John and Sue of local caterers

Temple Foods bring you a three course veggie/vegan dinner with flavours from around the world. A fun and friendly night features entertainment from guest guitarist Nigel Hobbins of "Only 8 1/2 Miles to Dreamland" fame. <http://www.templefoods.co.uk>

September 12, 2013 4.45pm Horsebridge West End London Coach Trip to see: Les Miserables

A story of the human spirit set against the backdrop of 19th-century France, seen by more than 60 million people in 42 countries and still breaking box-office records everywhere. Thursday 12 September (coach departs Whitstable 4.45pm)

Coach travel and theatre ticket all inclusive for £69.75

Following the huge success of the award winning film, a chance to see Les Miserables on stage, sitting in fantastic top price seats in the Dress Circle. A story of the human spirit set against the backdrop of 19th-century France, seen by more than 60 million people in 42 countries and still breaking box-office records everywhere, Cert 18, 1 hr 25 mins Tickets £5 Box Office 01227 281174

September 28, 2013 7.00pm **Horsebridge Quiz**

Come to our fabulous and popular Quiz. There will be prizes, tasty snacks (please bring drinks) with a good mixture of general trivia, brain teasers and quirky originality. Get a team together and book now to avoid disappointment. Come to our fabulous and popular Quiz. There will be prizes, tasty snacks (please bring drinks) with a good mixture of general trivia, brain teasers and quirky originality. Get a team together and book now to avoid disappointment.

September 29, 2013 10.00am **Horsebridge Autumn Market**

Our annual autumn market will be bursting with handmade treasures and vintage finds from local makers. Our annual autumn market will be bursting with handmade treasures and vintage finds from local makers.

With over twenty stalls to browse why not spoil yourself or start the Christmas shopping?

Shop till you drop and then pop in to the Horsebridge Cafe for some home baked cake and a cup of tea, what a lovely way to spend an afternoon.

FOR FURTHER DETAILS OF AFFILIATED ORGANISATIONS EVENTS SEE OUR WEBSITE

www.canterburyartscouncil.org.uk

OR VISIT INDIVIDUAL WEBSITES LISTED BELOW

Interested in creativity from the grass roots?

Like to help develop the arts locally?

Read on

Canterbury Arts Council, the leading voluntary arts charity in Canterbury and district, invites anyone interested in participating in its work –

in any way – to contact

the chair: **Sara Kettlewell**

Tel: 01227 266272

Email: chair@canterburyartscouncil.org.uk

AFFILIATED ORGANISATIONS

Member Name	Main Contact	Telephone	Email Address	Website Address
Bay Art Gallery	M Troughton	01227 372266	mctrou@hotmai.com	www.bayartgallery.org.uk
Beach Creative Community Interest Company	M Broughton	01227 369095	mandybroughton@hotmail.com	www.boughtonart.com
Cantemus	Mr A Moore	01303 210037	alan@cantemus.org.uk	www.cantemus.org.uk
Canterbury Historical and Archaeological Society	Miss G Wyatt	01304 840310	gillresearch@phonecoop.	www.canterbury-archaeology.org.uk
Canterbury Ceramic Circle	Dr V Webb	01227 452563	webbvirginia25@gmail.com	
Canterbury Chamber Choir	J Wearing	01227 700673		www.canterburychamberchoir.org.uk
Canterbury Choral Society	Mr T Meire	01622 607436	AntonyMeire@aol.com	www.canterburychoral.co.uk
Canterbury Classical Guitar Society	Mr J Kemp	01227 265503	john.e.g.kemp@btopenworld.com	cantguitar@canterburyartscouncil.org.uk
Canterbury Commemoration Society	Mr Michael Steed		msteed@hotmail.co.uk	
Canterbury Gregorian Music Society	Miss H Natrass	01227 459727	helen@helennatrass.com	www.gregoriansociety.org
Canterbury Music Club	Mr P Burton	01227 462029	peterdburton@btinternet.com	www.canterburymusicclub.com
Canterbury Music Makers	Mrs V Da Costa	01843 847213	vdocosta@tiscali.co.uk	
Canterbury Musicians	Mr I Carmalt	01227 762547	pianist-kent@care4free.net	www.e-canterbury.co.uk/organizations.php?id+91&area
Canterbury Operatic Society	Mrs A Stevenson	01227 711703	Anne.Stevenson@canterbury.gov.uk	www.canterburyoperatic.co.uk
Canterbury Orchestra	Dr E Harris	01227 728152	e.a.harris@btinternet.com	www.canterburyorchestra.org.uk
Canterbury Photographic Society	Richard Hunt	01227 792981	wendywiffles@yahoo.co.uk	www.canterburyphotographic.uwclub
Canterbury Players	Mr I Burroughs	01227 762095	icbee@icbee.plus.com	www.thecanterburyplayers.co.uk
Canterbury Recorded Music Society	Mrs J Bolton	01227 275603	jm_bolton@hotmail.com	www.thefrms.co.uk/affprogs/canterburyrms
Canterbury Singers	Elizabeth Jenkins	01795 536778	info@canterburysingers.com	www.canterburysingers.com/
Canterbury Society of Art	Mrs W Child	01227 371877	wendymchild@btinternet.com	
Canterbury Three Cities Association	Mary Hodgson	01227 769785	maryhodgson18@talktalk.net	www.canterbury.gov.uk
Canterbury Vocals	Kerry Boyle	07530 929821	kerrymboyle1@hotmail.co.uk	www.canterburyvocals.co.uk
Cantium Brass	Mrs B Goold	01304 380332	brassedoff@cantiumbrass.co.uk	www.cantiumbrass.co.uk
CCCU Art & Design Dept.	Mr M Butler	01227 454920	mike.butler@canterbury.ac.uk	www.canterbury.ac.uk/departments/art
CCCU Music Dept.	Tracy Selves	01227 782974	tracy.selves@canterbury.ac.uk	www.canterbury.ac.uk/events/music
Charlton Park Foundation	Mrs G Twigg	01227 831355	gubby@charlton-park.org	www.charltonpark.com
Christian Art	Mr M Hannah	01227 464906		
City of Canterbury Brass Band	Mr M Wadey	01227 700526	michael.wadey@toucansurf.com	
Crowther Wind Quintet	Mr I Crowther	01227 763965	ian@crowthersofcanterbury.co.uk	www.crowthersofcanterbury.co.uk
CT6 Contemporary Art Group	Mrs M Troughton	01227 372266	mctrou@hotmai.com	www.ct6arts.co.uk
Dawn Chorus Recording Company	Mr J Magill	07970 046668	joel@dawnchorusrecordco.com	
Dickens Fellowship, Canterbury	Mr J Ingram	01227 472589		www.dickensfellowship.org
Dolce Singers	Mrs L Edwards			www.dolcesingers.co.uk
East Bridge Chorale	Mrs Geraldine Wyant	01227 721319	geraldine@kola18.demon.co.uk	www.eastbridgechorale.com/
English-Speaking Union (Canterbury & East Kent)	Dr V Ainscough	01227 471180	noelensoll@clara.co.uk	www.esu.org
Folk in the Barn	Mrs D Earl	01227 831493	debs@folkinthebarn.co.uk	www.folkinthebarn.co.uk
Friends of Canterbury Festival	Mrs S Martell	01227 452853	sylvianemartell@canterburyfestival.co.uk	www.canterburyfestival.co.uk
Herne Bay Arts Group	Mrs P Hollands	01227 364947	angela.kennedy54@live.com	
Herne Bay Musical Theatre Society	L McCann	01227 361146		hbmts.co.uk
Herne Bay Organ & Keyboard Club	Mr P Sweet	01227 371591	phil@michan.freeseve.co.uk	www.organfax.co.uk/clubs/hernebay
Historical Association - Canterbury Branch	Jean Gray	01227 750576	canterburyha@gmail.com	
Horsebridge Arts & Community Centre	Liz Daone	01227 281174	info@horsebridge-centre.org.uk	www.horsebridge-centre.org.uk
Invicta Concert Band	Mrs L Dack	01622 858179	liddack@btinternet.com	
Kent Adult Education	Abigail Levitt	01227 592710	Abigail.levitt@kent.gov.uk	www.kentadulthoodeducation.co.uk
Kent Competitive Festival (Singing & Instrumental)	Mrs S Rooke	01227464668	sheilarooke@tiscali.co.uk	
Kent Piano Festival	Mrs S Rooke	01227464668	sheilarooke@tiscali.co.uk	www.kentfestival.org
Kent Youth Dance	Lesley Cox	01227 365013	kentyouthdance@hotmail.com	www.kentyouthdance.co.uk
Kent Youth Theatre	Mr R Andrews	01227 730177	richard@kentyouththeatre.co.uk	www.kentyouththeatre.co.uk
Lees Court Music	Mrs J Norford	01227 368679	jillnorford@aol.com	
Lindley Players	Mr H Lee	01227 275959	actorlee@btinternet.com	
Littlebourne Art Group	Mrs W Blanchet	01227 721632	blanchet.tudorcottage@talktalk.net	
Littlebourne Barn Committee	Mrs W Blanchet	01227 721632	blanchet.tudorcottage@talktalk.net	www.littlebournebarn.co.uk
Mock Tudor Band	Mrs Jean Starke	01227 367383	jeansec25@aol.com	www.mocktudorband.co.uk
Music at St Peters	Mrs J Devenish	01227 456359	jenny.deven@btinternet.com	www.musicatstpeters.org.uk
Music for Change	Rosie Escott	01227 459243	rosie@musicforchange.org	www.musicforchange.org
Musical Theatre Society - University of Kent	Jess Moloney		jam60@kent.ac.uk	www.kentunion.co.uk/societies/musicaltheatre
Oyster Morris	Mrs M Darby	01227 450580	pandm@darby.myzen.co.uk	www.oystermorris.org.uk
Phoenix Performing Arts	Sophie Guariglia	07968367397	phoenixperformingarts@hotmail.co.uk	www.phoenixperformingarts.co.uk
Playmakers (Herne Bay Little Theatre)	Ms J Challis	01227 361255		www.playmakers.co.uk
Playtime Theatre Company	Ms S Kettlewell	01227 266272	playtime@dircon.co.uk	www.playtimetheatre.co.uk
Pride In Canterbury	Mr A Brettell	01227 265950	prideincanterbury@btinternet.com	www.prideincanterbury.org.uk
Quodlibet	Mrs J Farrell	01227 766301	jane Farrell@btconnect.com	
Saveas Writers' Group	Luigi Marchini		saveaswriters@hotmail.co.uk	
Sidney Cooper Gallery	Harriet Gifford	01227 453267	harriet.gifford@canterbury.ac.uk	www.canterbury.ac.uk/sidney-cooper
Snowdown Colliery Male Voice Choir	Mr B Marsh	01227 453007	Bcmarsh35@aol.com	www.snowdown-choir.co.uk
Sounds New	Ms M Castelletti	01227 780800	info@soundsnew.org.uk	www.soundsnew.org.uk
South East Dance	Freya Finnerty	01322 618618	freya.finnerty@southeastdance.org.uk	www.southeastdance.org.uk
The Hundred	Mr T Conway	01227 700327	vida.conway@btopenworld.com	
The Really Promising Company	Christel Moor	01227 458892	chm39@hotmail.com	www.reallypromisingcompany.org.uk
Theatre Craft	Mrs C Railton	01227 365882	chrisrailton11@gmail.com	www.theatrecraft.org.uk
Whitstable Art Society	Mr G Lewns	01227 751727	gordon@lewns36.freeseve.co.uk	www.whitstableartsociety.co.uk
Whitstable Brass	S Holness	01227 266248	sheilamholness@yahoo.co.uk	www.whitstablebrass.co.uk
Whitstable Choral Society	Mr C Potts		CPotts@cds.kent.sch.uk	www.whitstablechoral.org.uk
Whitstable Community Samba Band	Ms S Grogan		uturnedlady63@yahoo.co.uk	www.sambapelomar.com

Whitstable Music Society
World Education Development Group
YearOne, The Gallery Project
Zimbabwe International Performance
Alliance - ZIPA

Mr J Walker
Ms C Tagart
J Farnham
D Gumpo

01843 853790
01227 766552
07702188990
01227 637512

jwalker121@gmail.com
info@wedg.org.uk
jessicafarnham@mac.com
dumigumpo@gmail.com

www.whitstablemusicsociety.org.uk
www.wedg.org.uk
www.zipa.org.uk

The next edition of Arts Events Sept2013 to cover the period to April 2014. **Deadline for submitting material is Dec 15th 2013**

Please send copy to: artsevents@canterburyartscouncil.org.uk or artsevents.cac@gmail.com

Or Linda Jordan, The Old Rectory, Ashford Road, Chartham Canterbury Kent CT4 7HS or Tel: 01227 818547

CANTERBURY



ARTS

COUNCIL